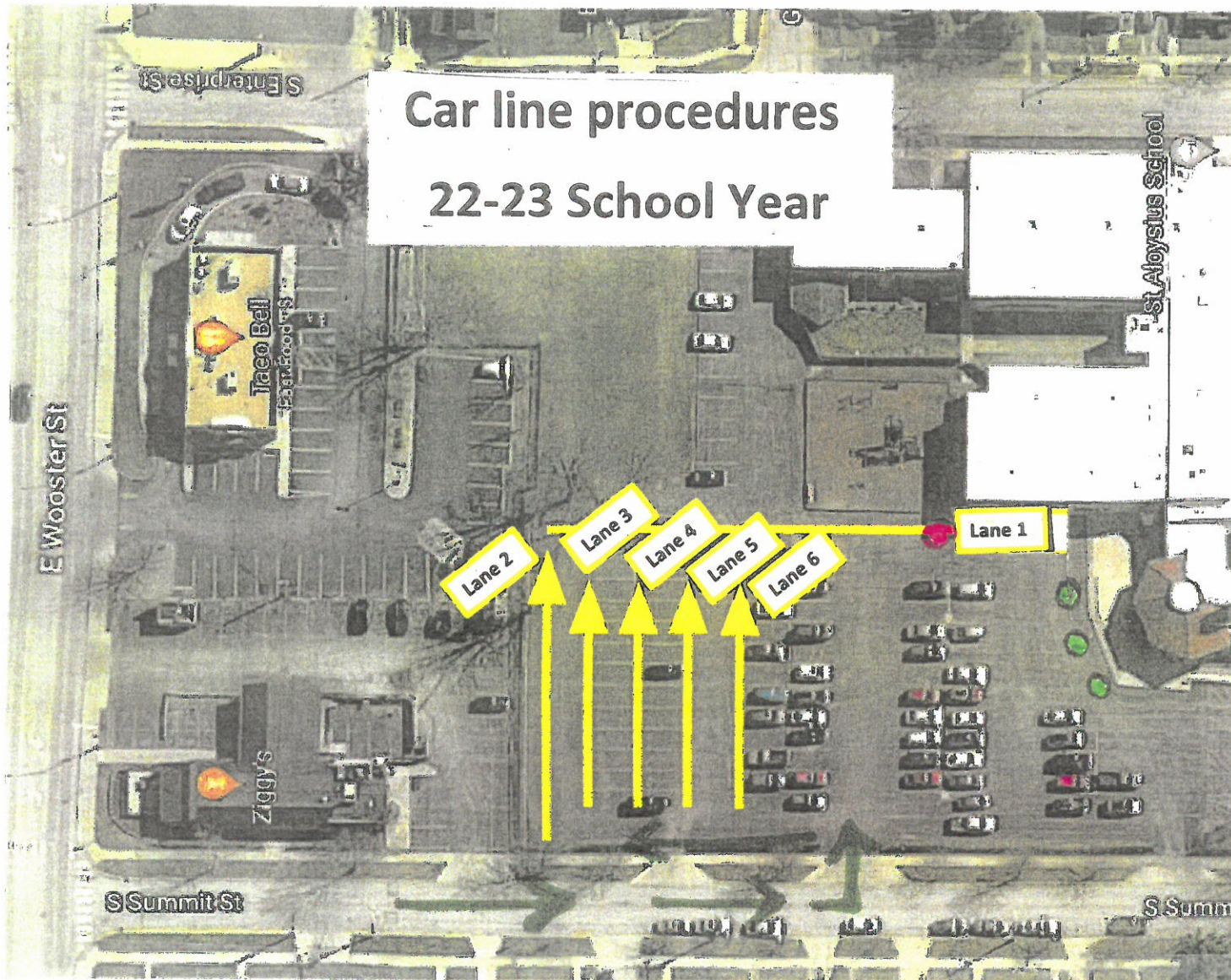


After consultation with Bowling Green city and emergency services personnel, we will be following a new procedure. This plan should help to minimize our car line's impact on the neighborhood and city streets and allow for better traffic flow in case of an emergency.

Car line procedures 22-23 School Year



*Please enter through the middle gate as indicated by the green arrows

*The first car to arrive should follow the arrow along the fence line and turn right, stopping at the cone placed where the red dot is on the map (just past the playground).

*We will fill up lane 1, followed by lane 2, and so on as necessary up to lane 6.

*Once the carline begins moving, each lane will follow in number order so that cars pull through in the order that they arrived.

* When it is time to begin dropping off or picking up students, a staff member will remove the cone at the red dot and cars can proceed to the 3 loading and unloading spots marked with green dots on the map.

*For morning drop off, please have your child ready to unload as quickly as possible once you reach a designated spot. Some parents have their children unbuckle and gather materials while waiting and this really helps keep the line moving.

*At pick up, if you have to help buckle a child into a complicated carseat, please feel free to pull forward to the handicapped spots by the church to get them settled.

*Please note that unless you're in a hurry to get somewhere, you can save a lot of time in line by not being one of the first cars to arrive. Once the process starts it should move pretty quickly.

There will be cones to mark the lanes and staff members present to help direct traffic until things are running smoothly. Please be patient and flexible as we may have to adjust as we go.